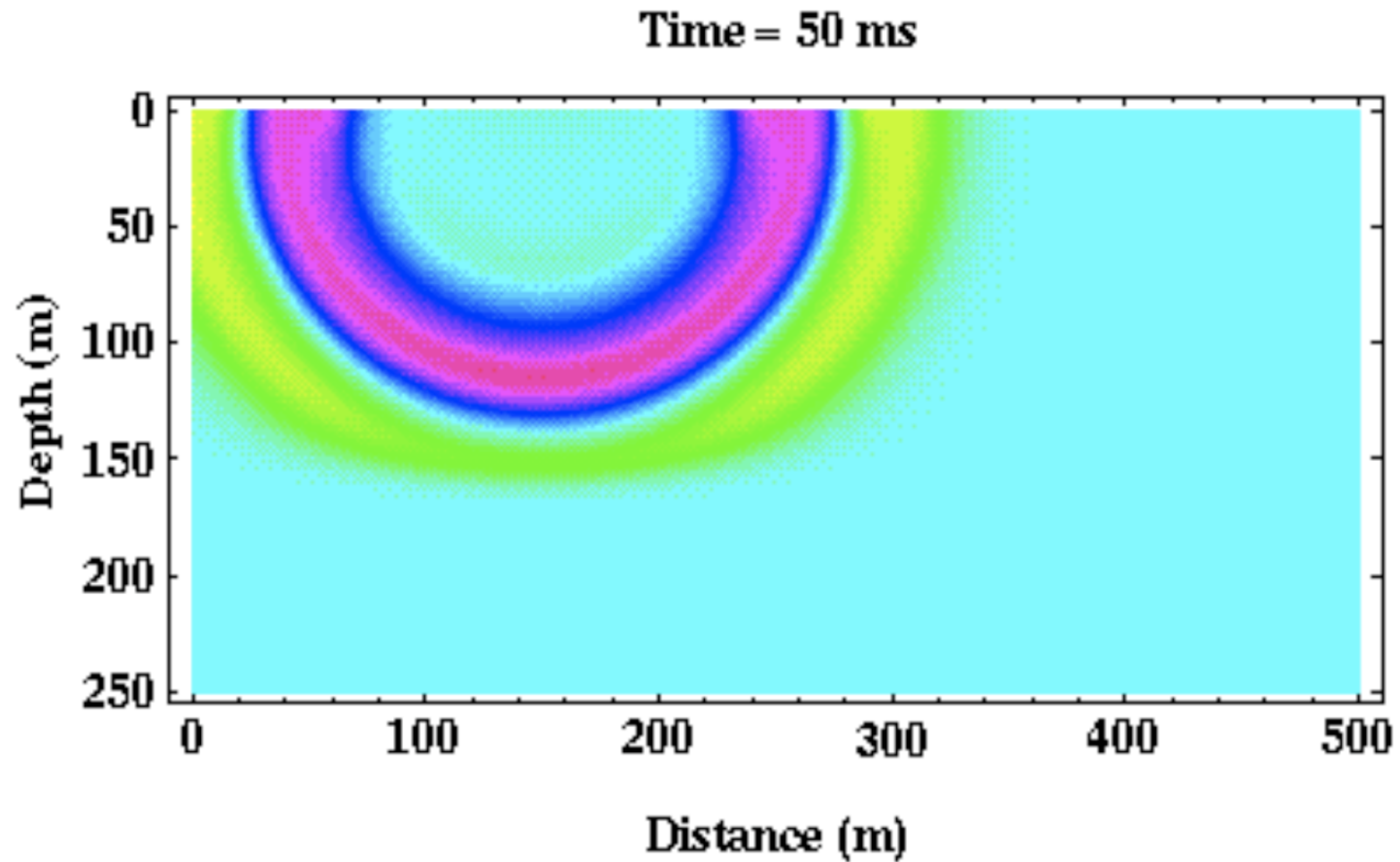
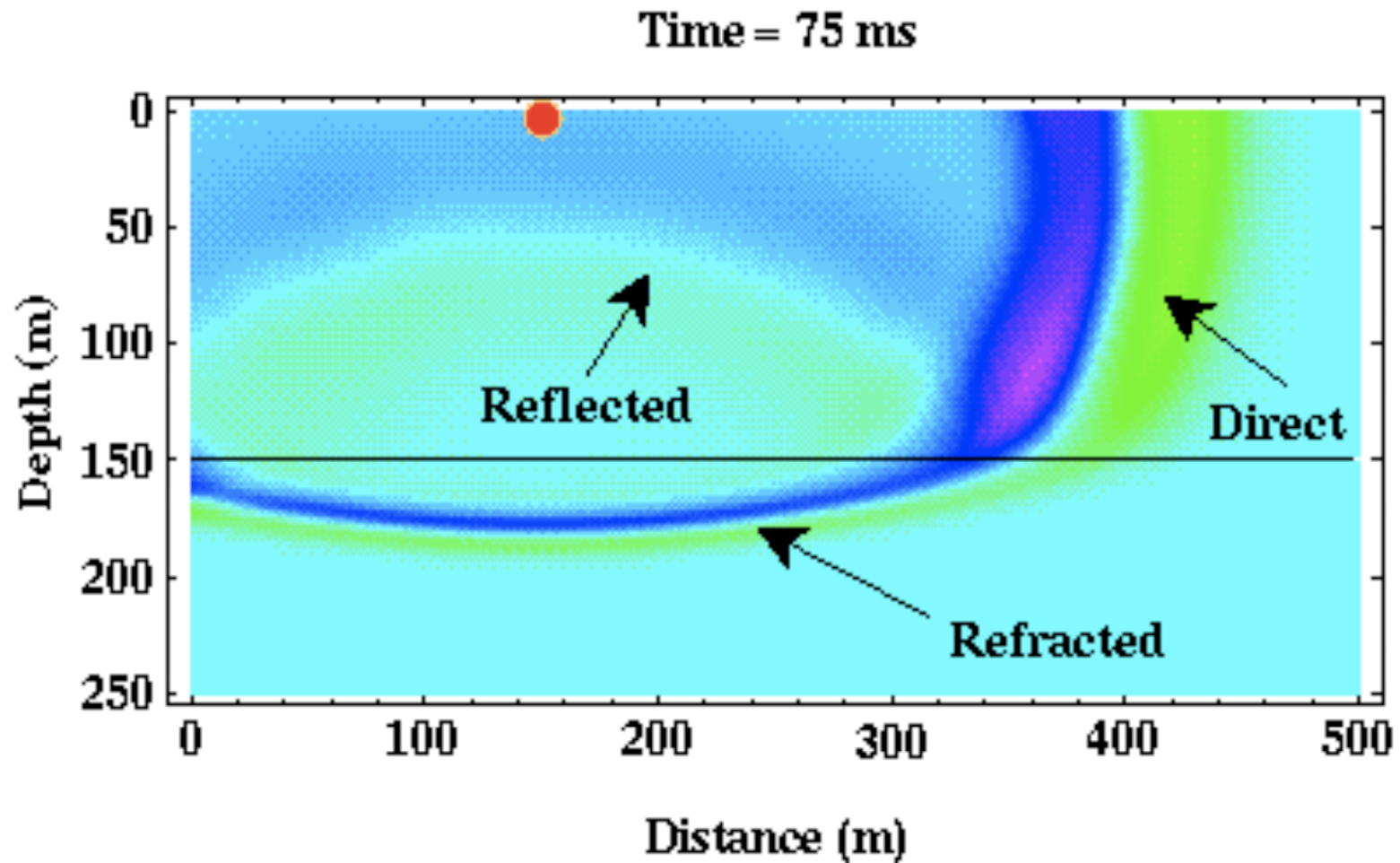


Refraction Seismics

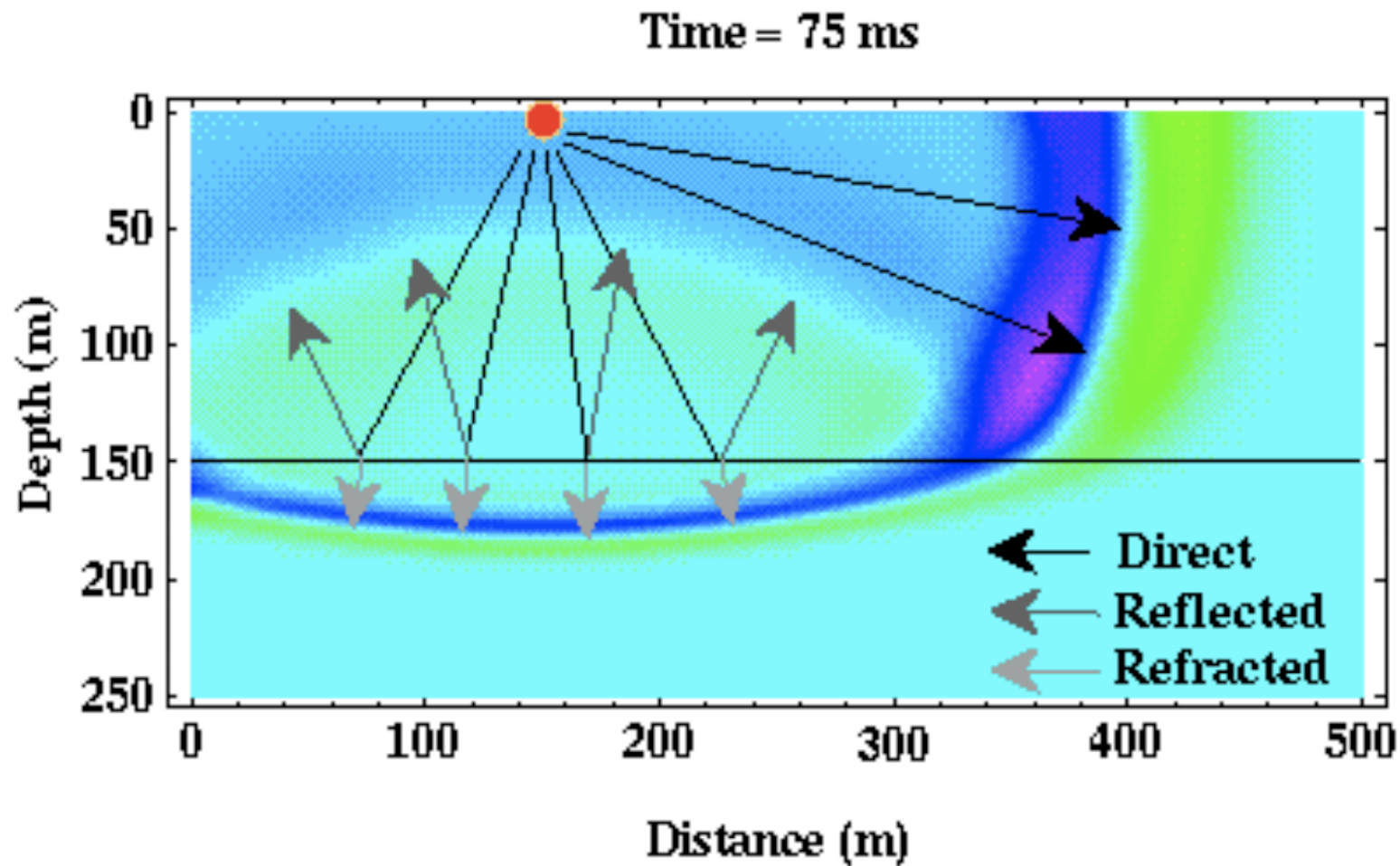
Spherical wave in upper layer



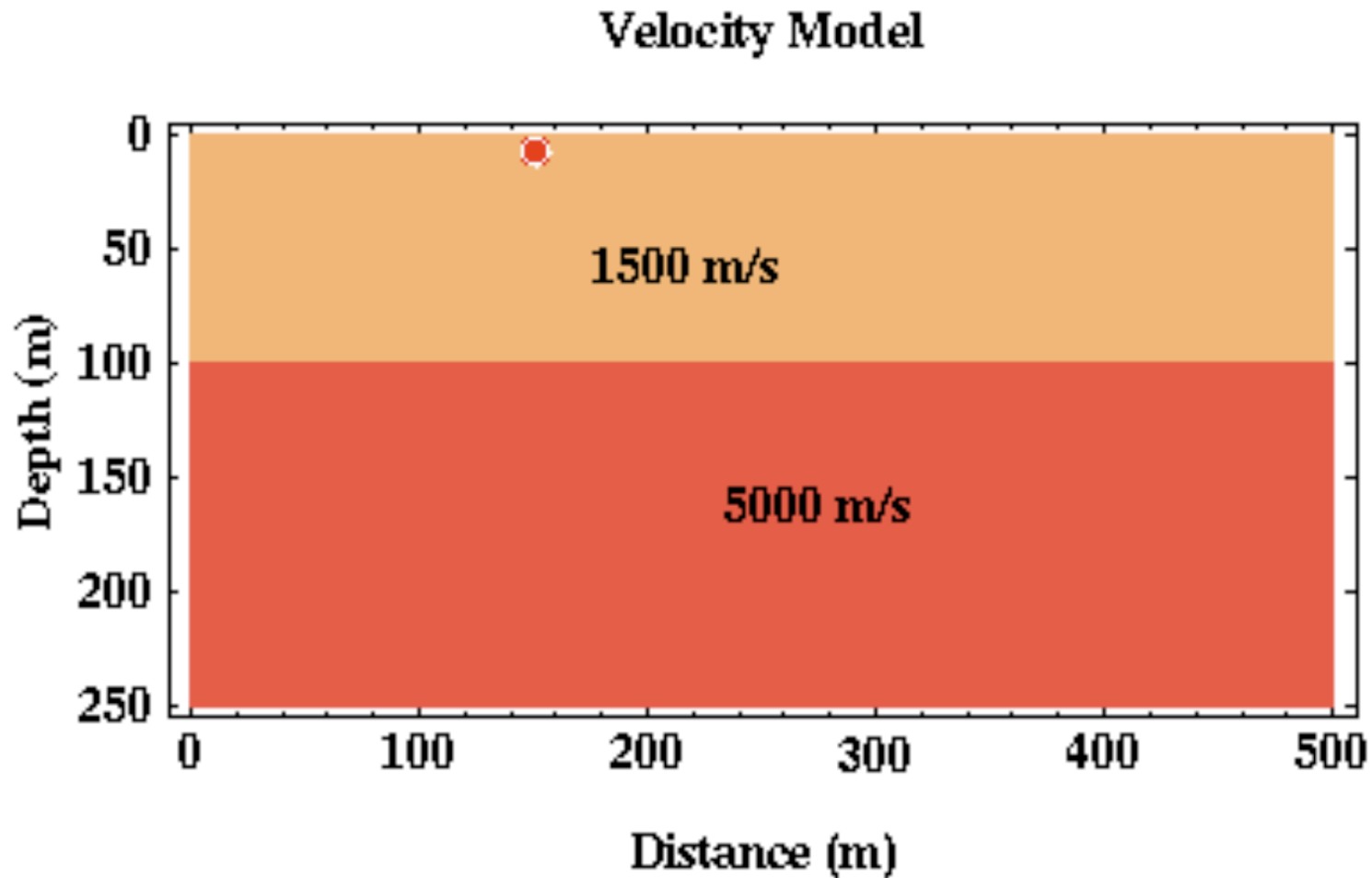
Waves penetrating a low-velocity layer



Rays penetrating a low-velocity layer

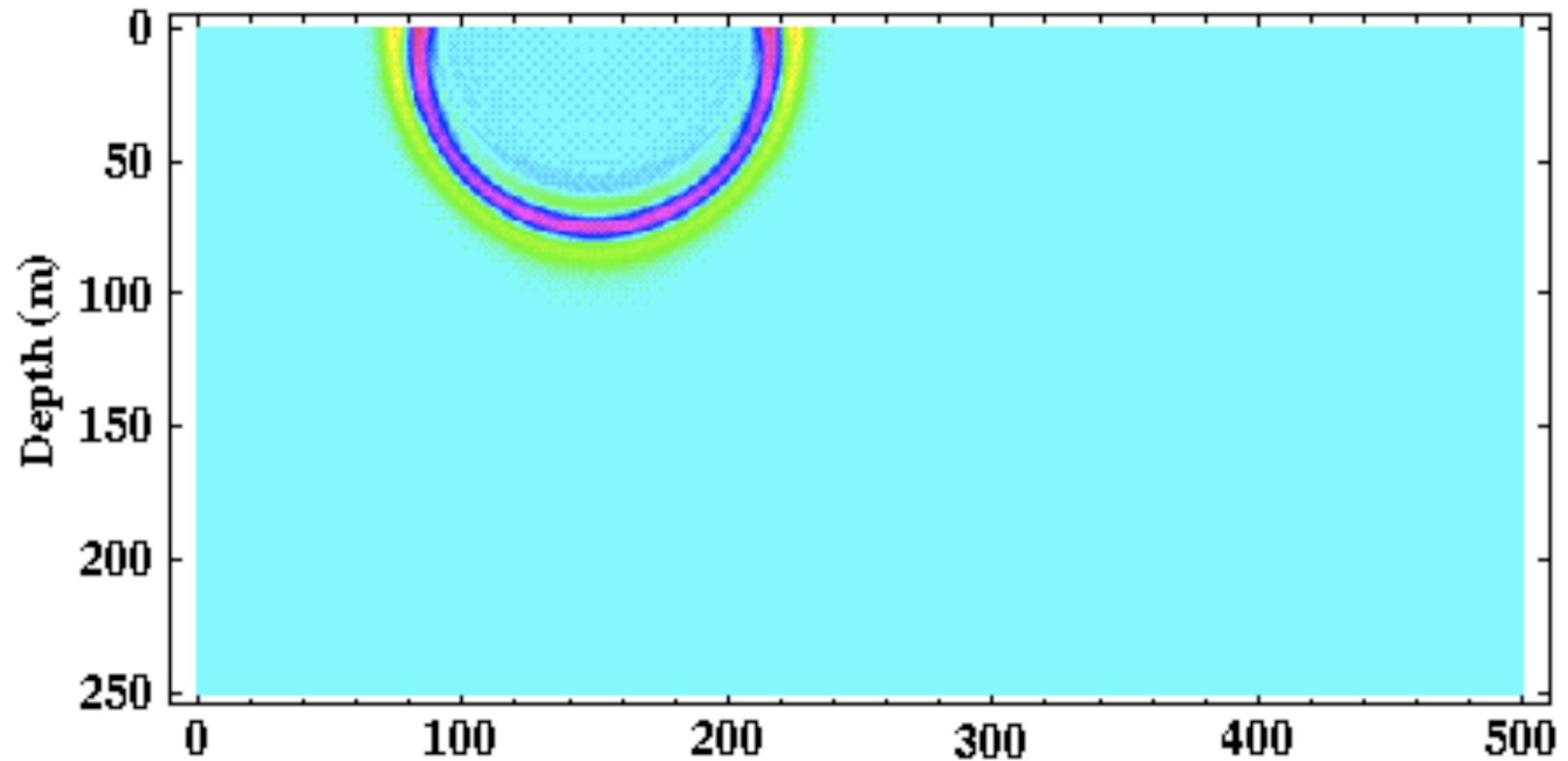


Increasing velocity with depth



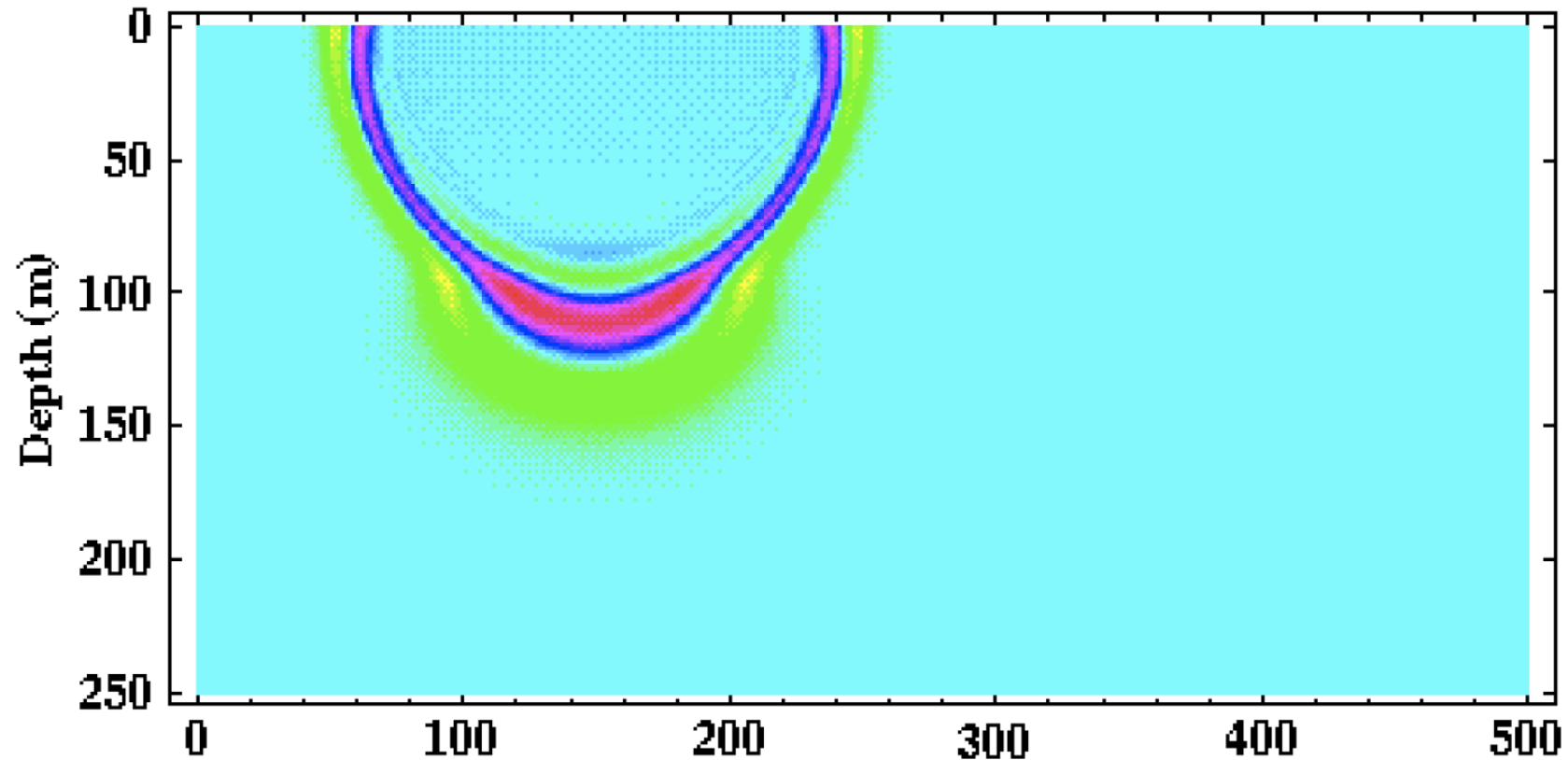
Spherical wave

Time = 65 ms



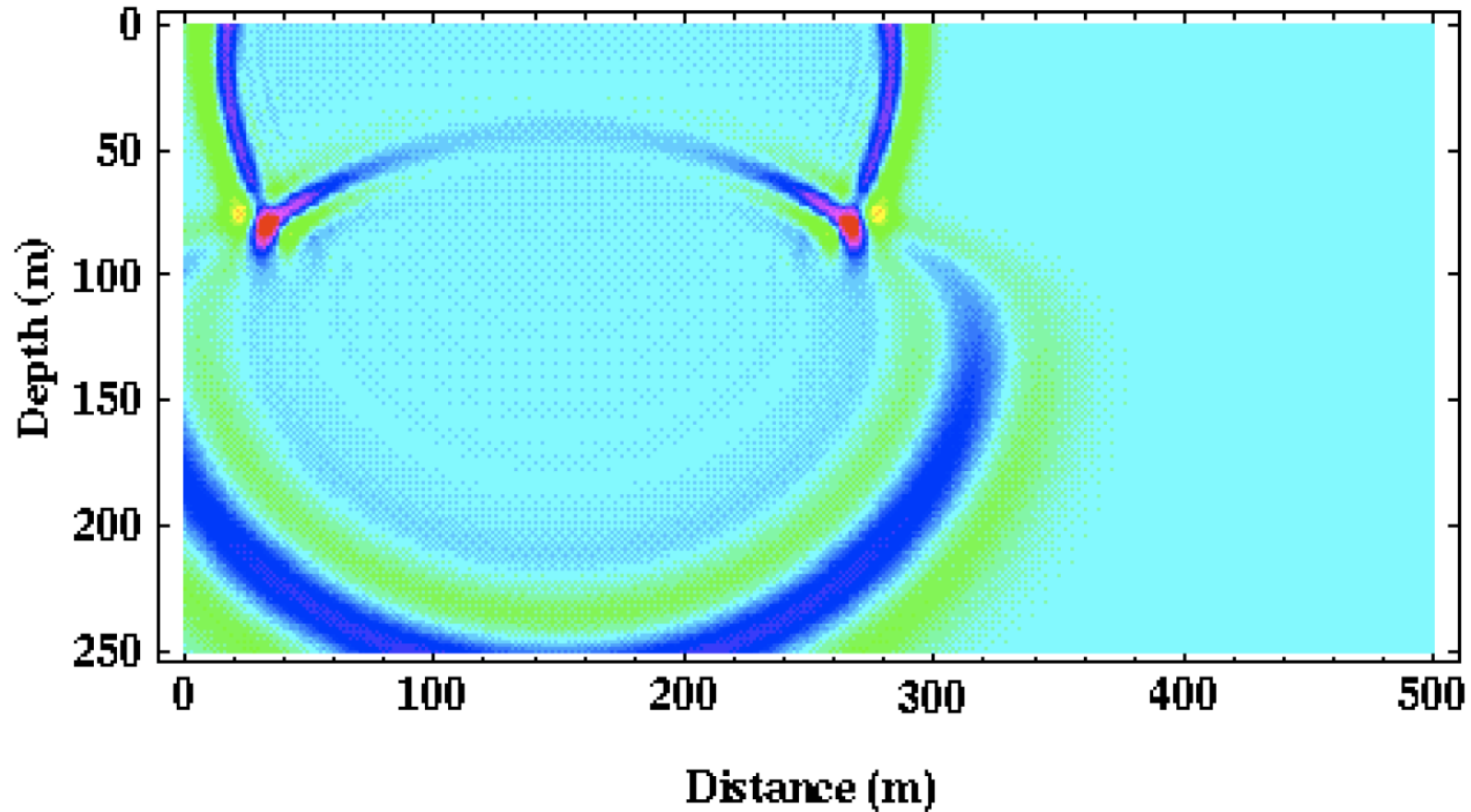
Waves penetrating a high-velocity layer

Time = 80 ms

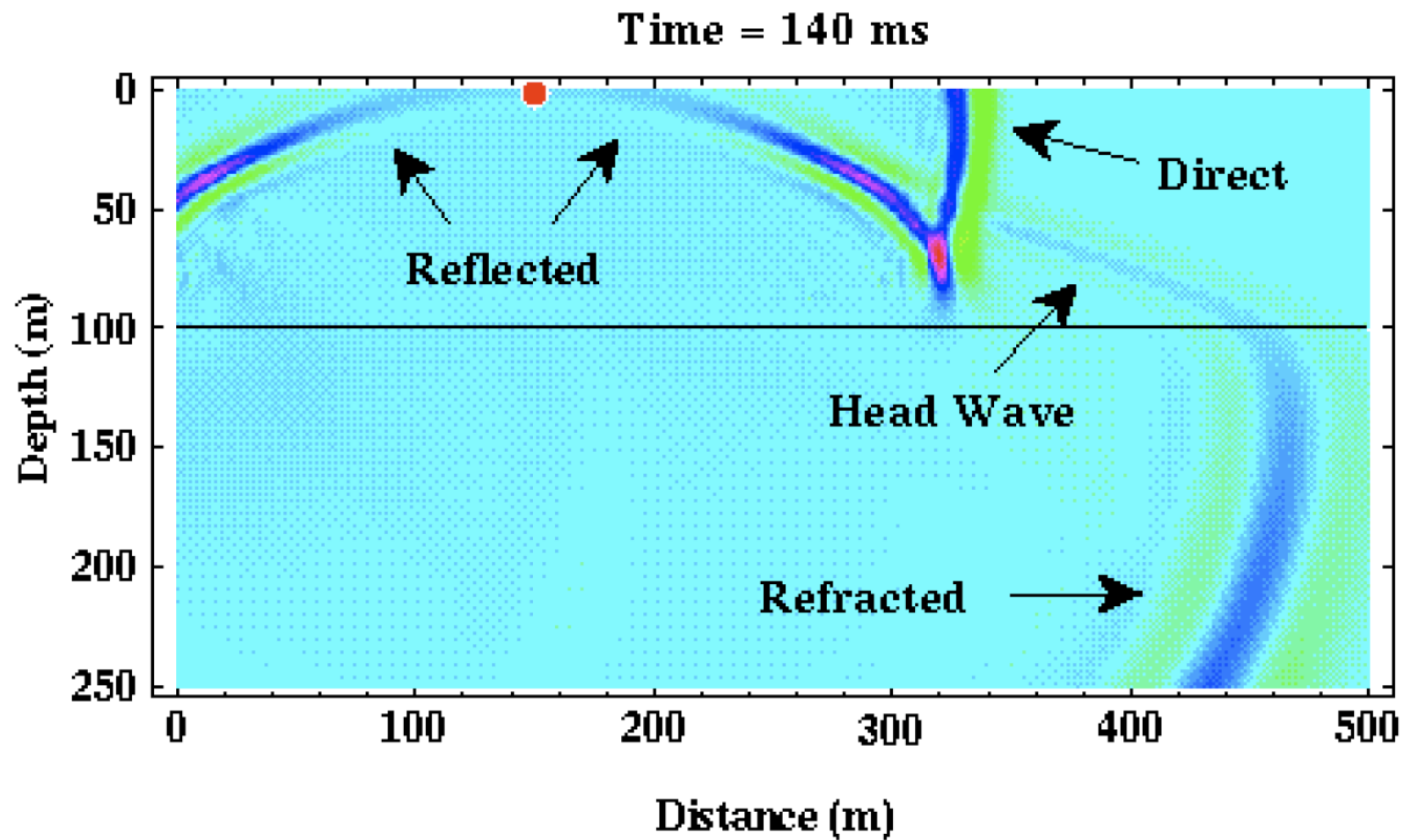


Waves penetrating a high-velocity layer

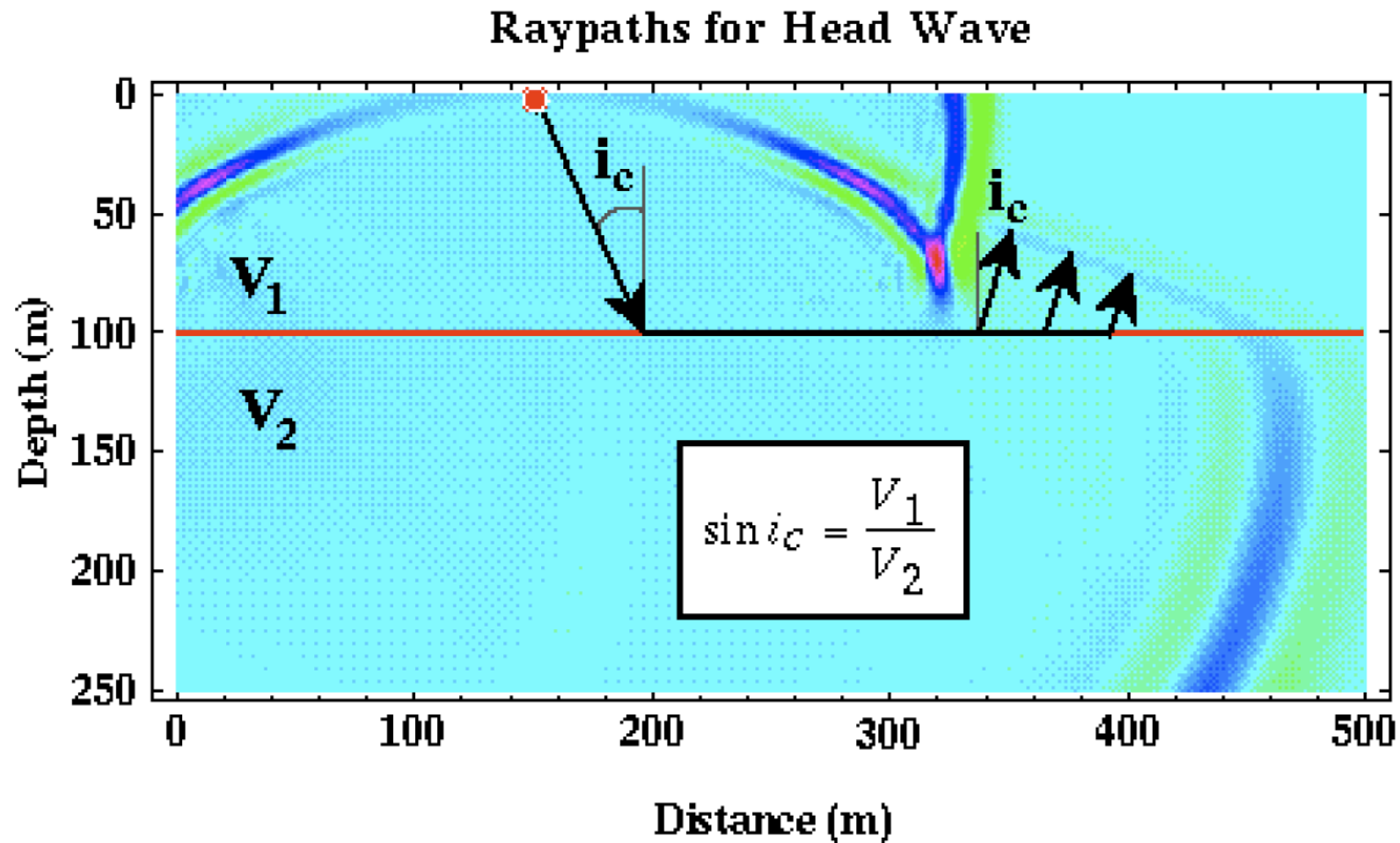
Time = 110 ms



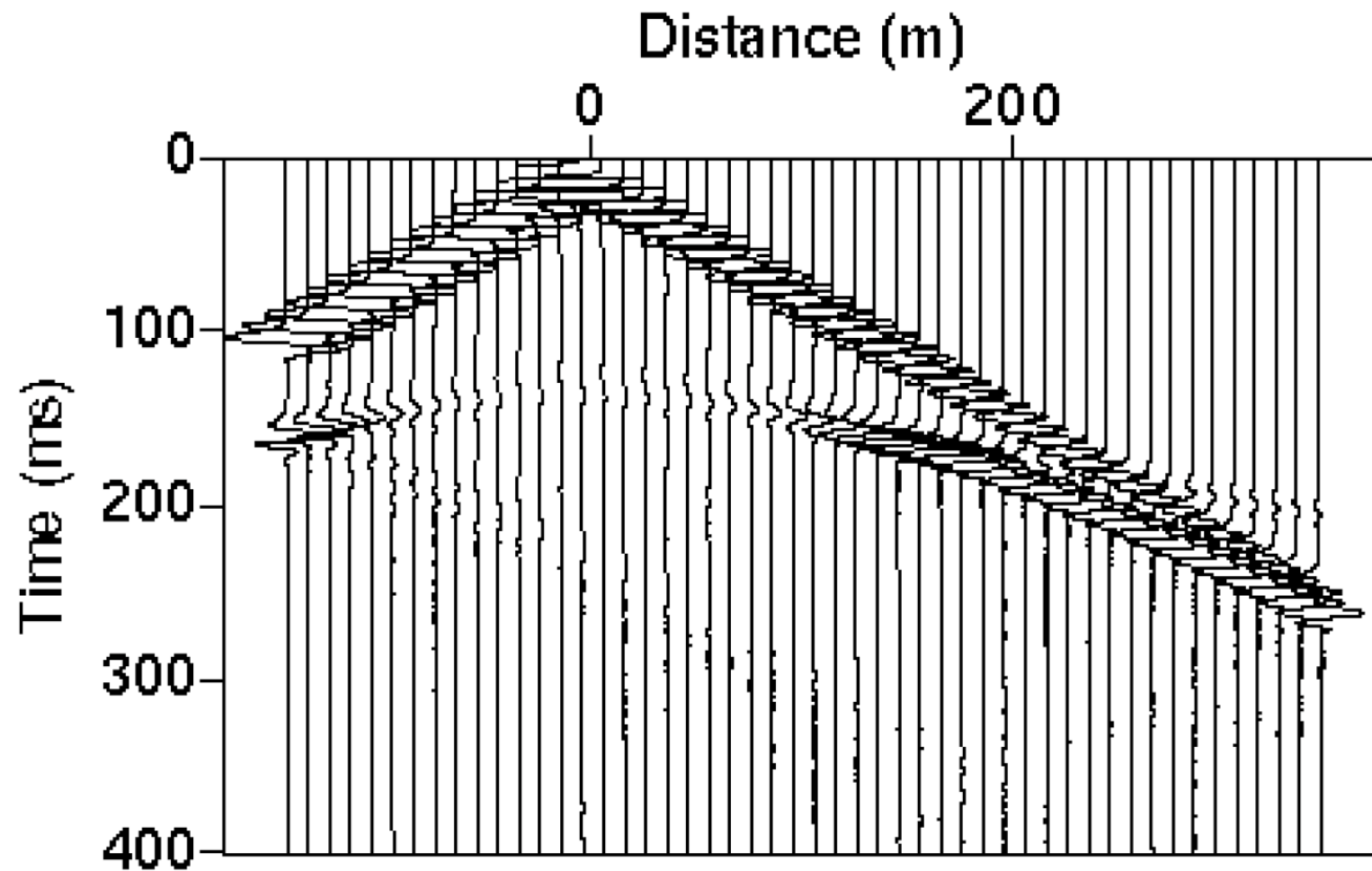
The head wave



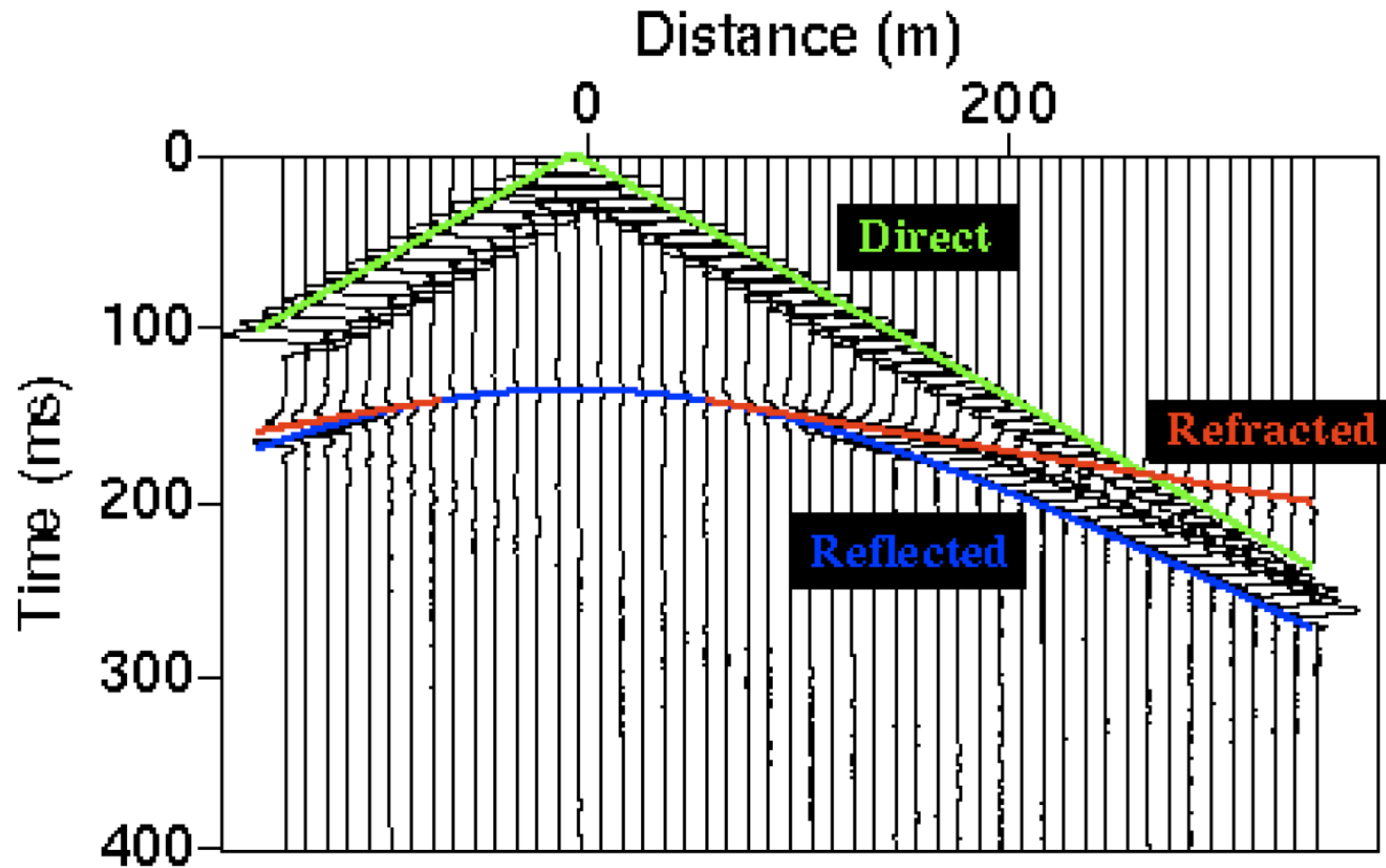
The rays of a head wave



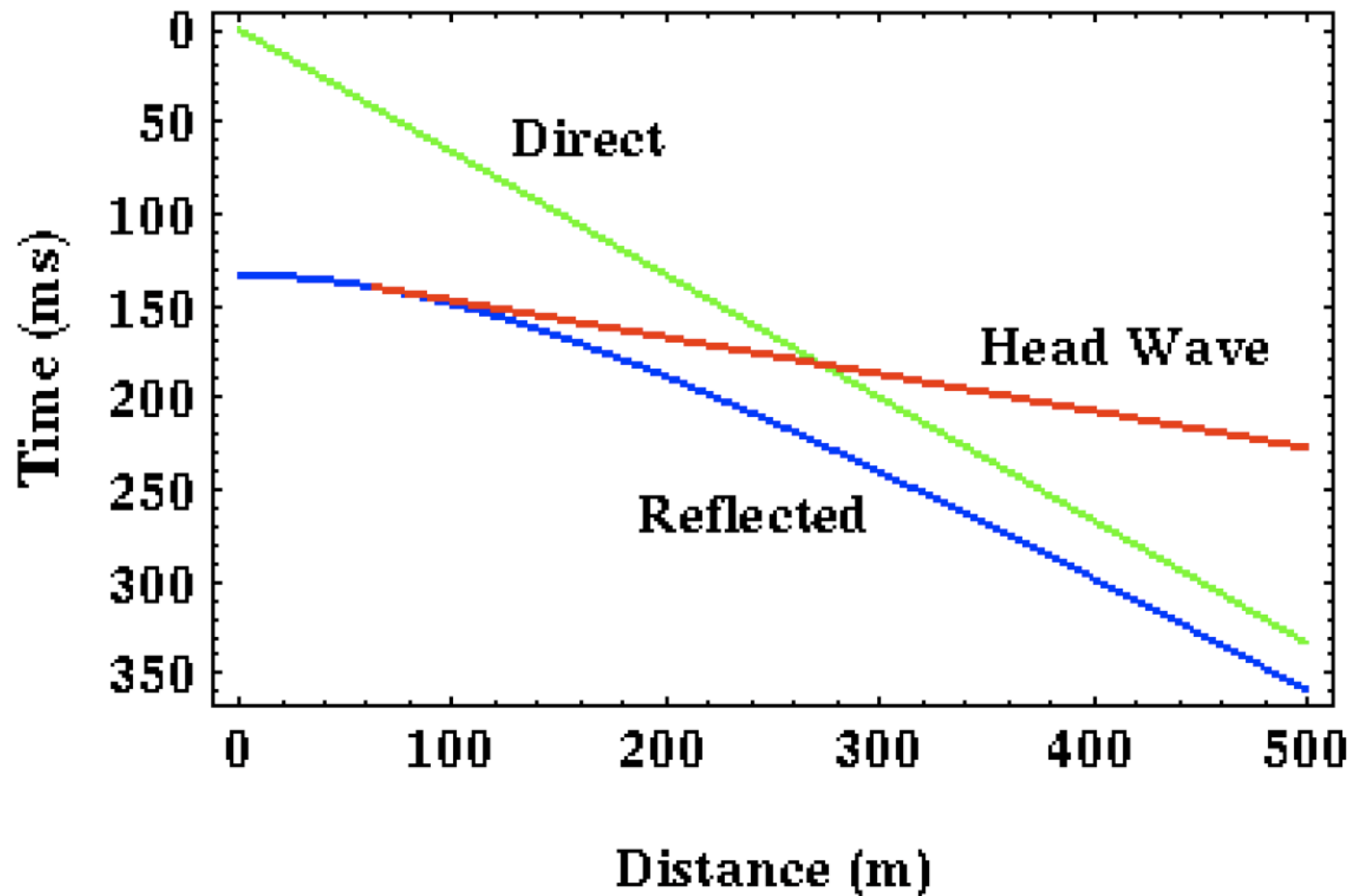
The seismogram



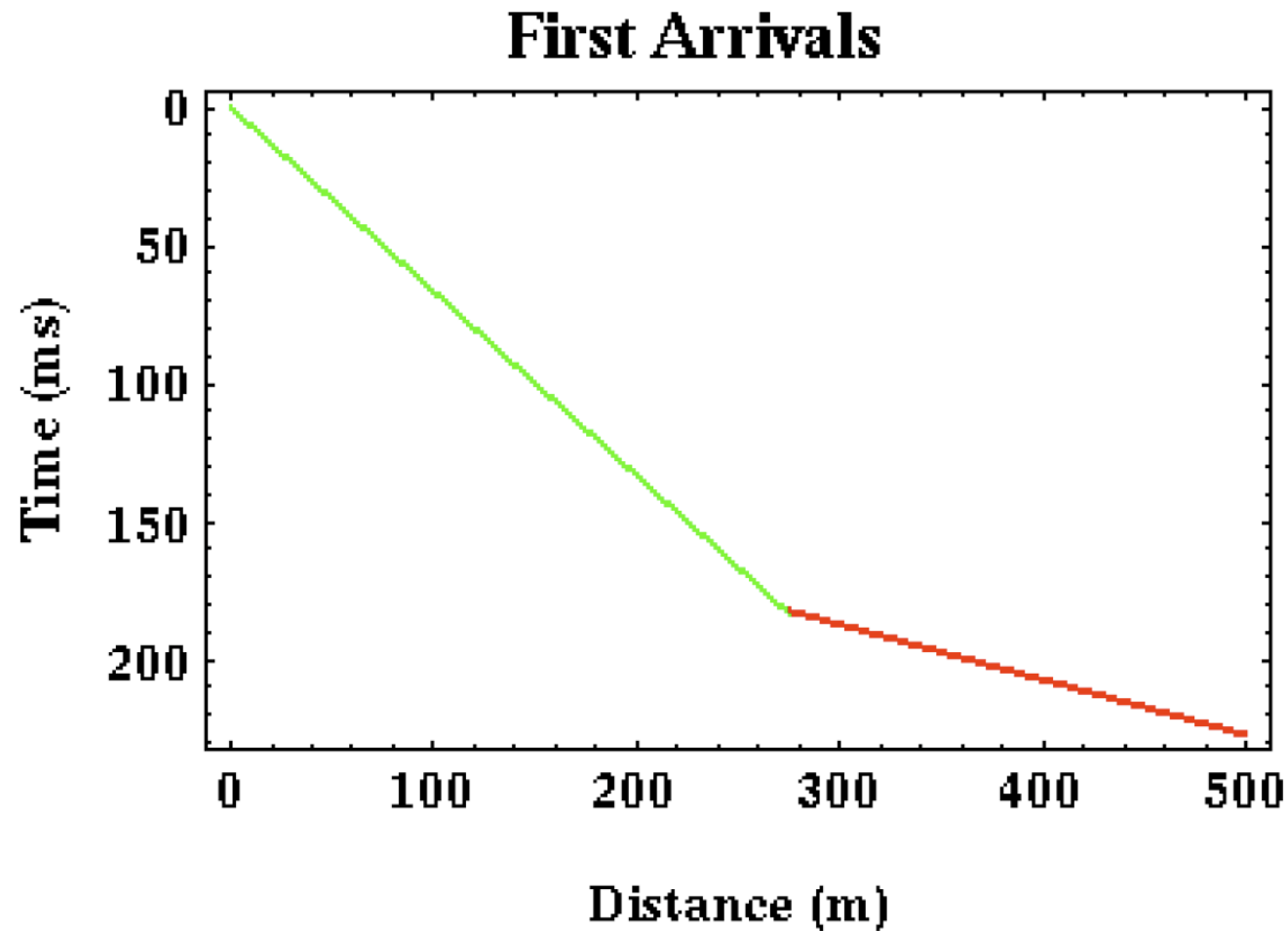
The seismogram



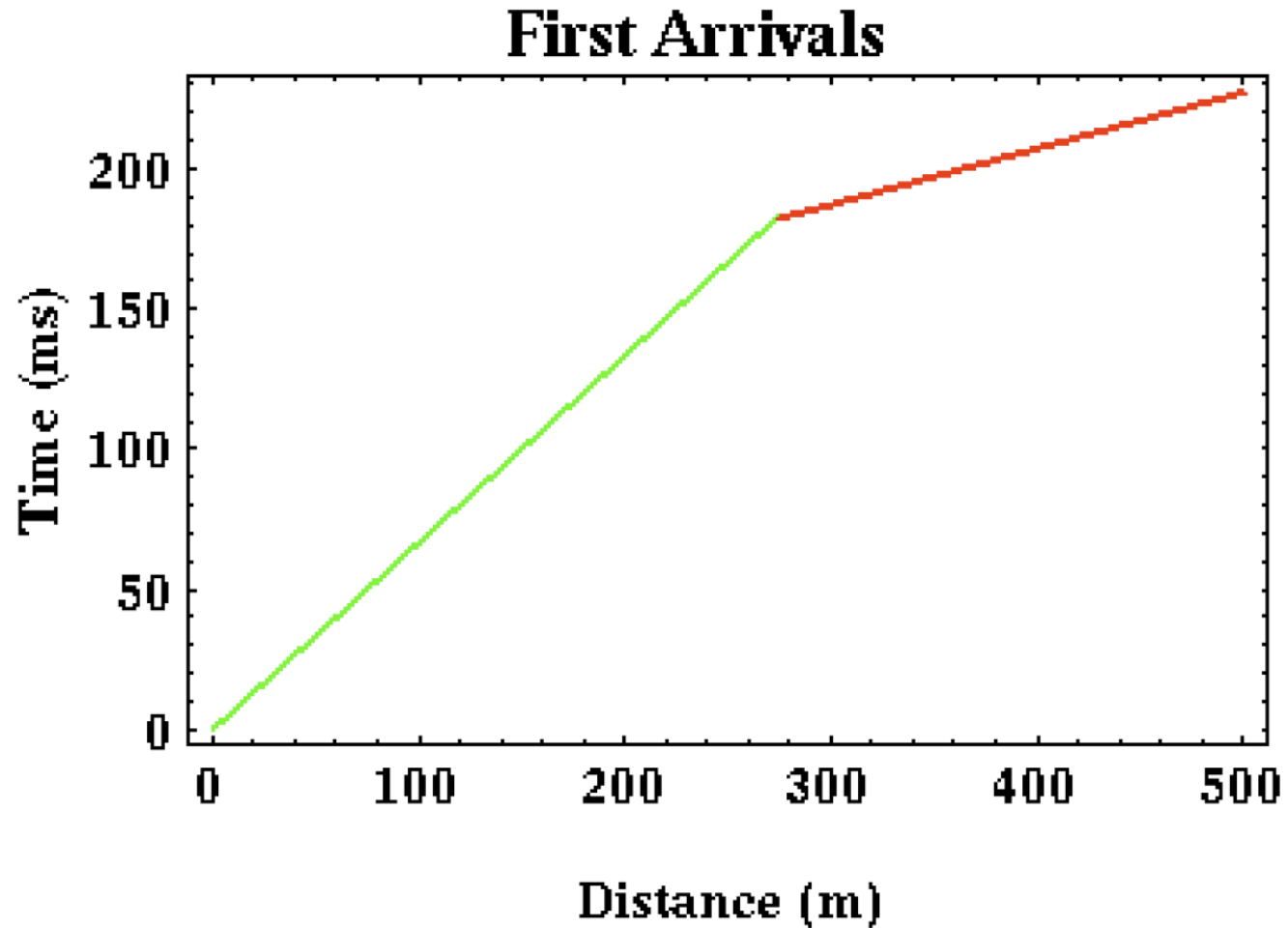
The travel time curves



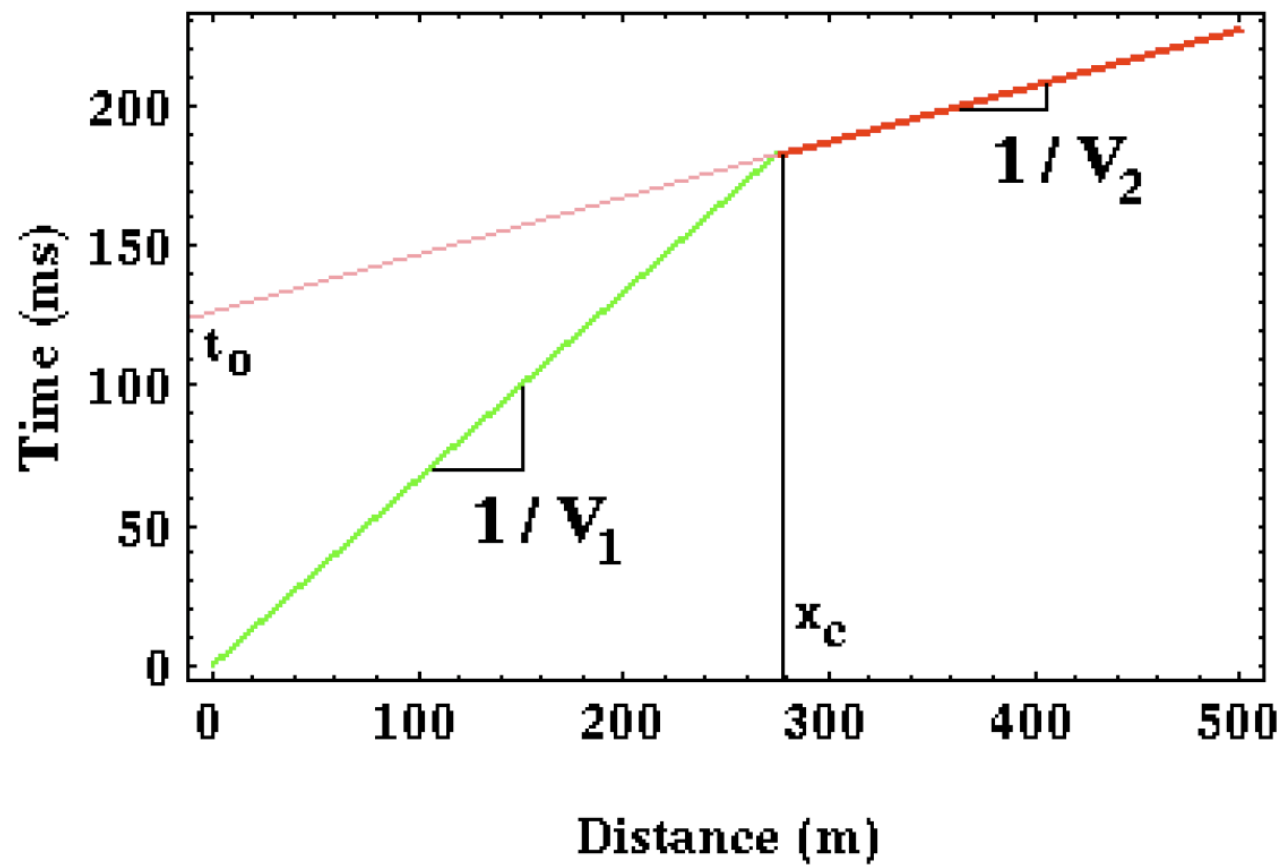
Travel time curves for first arrivals



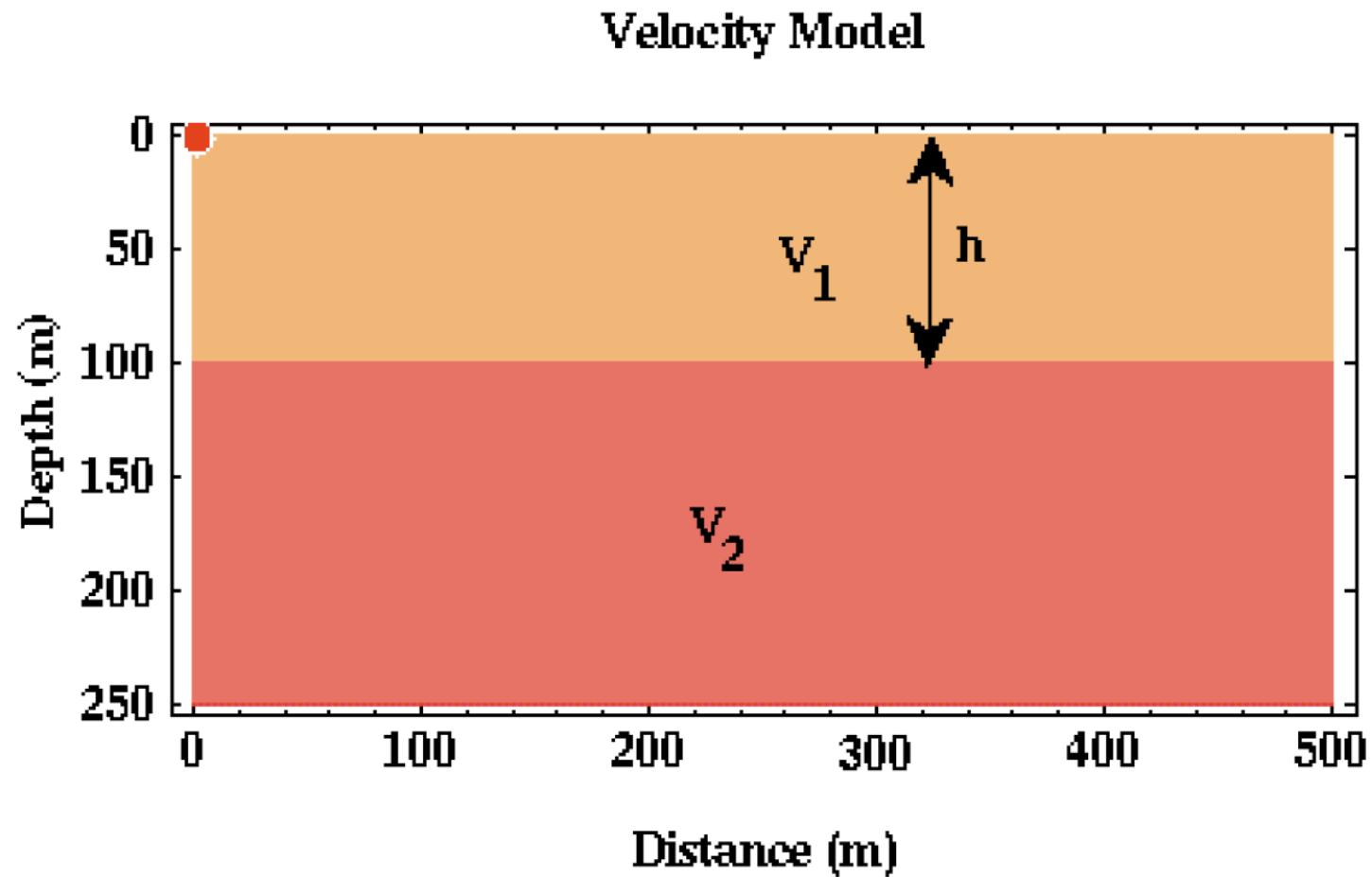
Travel time curves for first arrivals



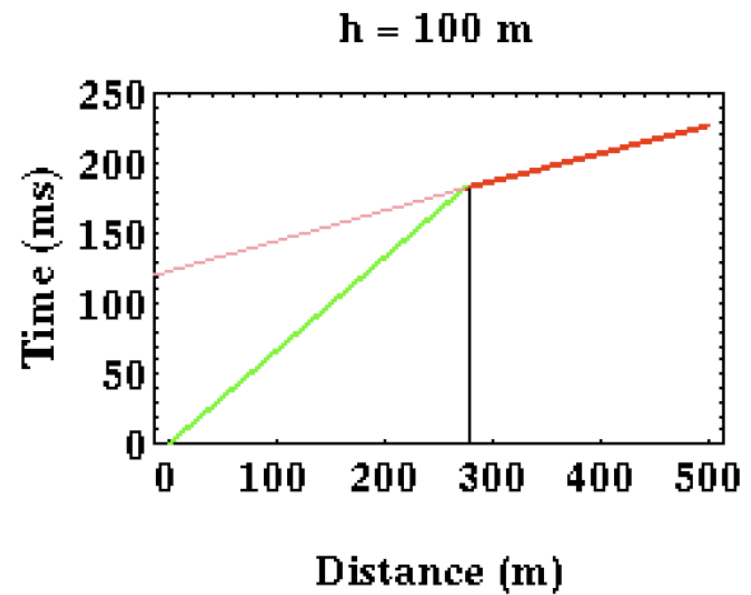
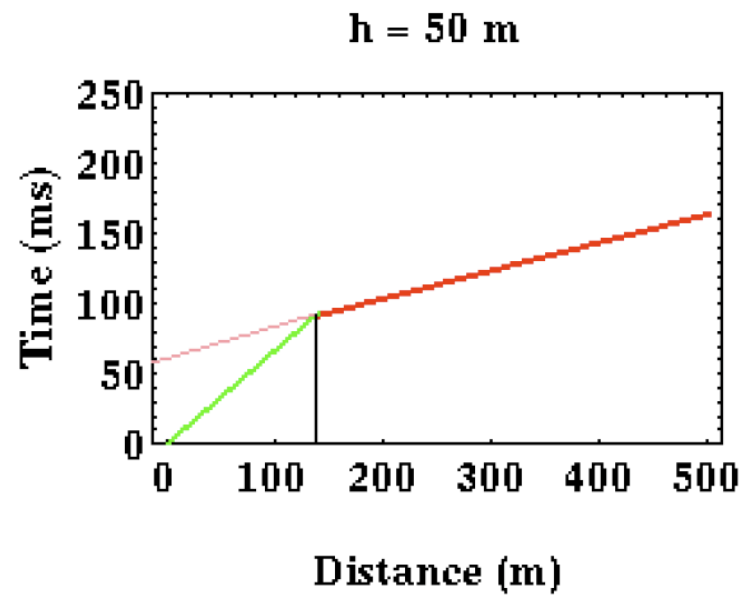
Relationship Between Curve and Parameters



Sensitivity to the layer thickness



Sensitivity to the layer thickness



Refraction geometry

